

GEMINI 4" | Order Specification Guide

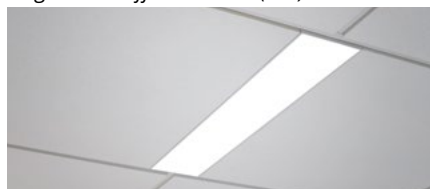
GEMINI™ 4"

Product Name	LED/K Color	Light Output	Grid Size	Grid Type	Optic	Mounting Clips	Color	Driver	Options
GEM4 = GEMINI 4" Single Lens	HW = 3000K MW = 3500K MN = 4000K CN = 5000K TU = 2700K-6500K 90 CRI available, on request.	LO = Low MO = Medium HO = High Custom lumen outputs available, consult factory.	2 = 2 ft 4 = 4 ft 5 = 5 ft 6 = 6 ft 8 = 8 ft Metric M6 = 60 cm M12 = 120 cm	24 = 15/16" 15 = 9/16" 15B = 9/16" Bolt Slot	DW = Diffused White VC = Vista Comfort®	U = Universal A = Armstrong W = Specialty Wood C = Custom	W = White B = Black C = Custom	UNV = 120-277 VAC 0-10V dimming DAL = 120-277 VAC DALI 2 dimming DC = Acuity DC2DC 57V ¹ 347 = 347 VAC 0-10V dimming ² POE = Power over Ethernet ¹	CP = Chicago Plenum IP = IP65 LA = Lutron Athena Wireless Node NW = nLight® Wired NA = nLight® Air ¹ Optional EM Battery Kit available (sold separately).

www.jlc-tech.com/patents

¹ Consult factory² Not available with tunable white

Single Lens Diffused White (DW)



Single Lens Vista Comfort (VC)

**NOTES:**

GEMINI 4" is designed to provide a 4" linear slot light on-center to the grid, by replacing standard cross members in a suspended ceiling. Its integrated structural housing features a channel designed for our twist clip technology (twist clips provided), enabling secure connections for intersecting cross tees or main runners; without the need to build a custom opening in the grid ceiling.

APPLICATIONS:

Executive, Medical, Health, Educational, Retail, Hotels, Airport, Hospitality and any open space areas that require a unique and elegant architectural lighting design.

MOUNTING:

Universal mounting clips for easy installation with Armstrong 15/16" or 9/16" suspension systems or standard 15/16" or 9/16" T-bars of most manufacturers ceiling suspension systems. Compatible with tegular and lay-in tiles. Mounting Clips "W" for grille and plank specialty wood ceilings, consult factory for wood ceiling specific shop drawings details.

[Refer to installation page on website.](#)

MATERIALS & OPTICS:

Powder coated aluminum extruded body, steel mounting clips, and powder coated steel end caps. "DW" optic uses high efficiency frosted acrylic PMMA lens for even illumination, "VC" optic uses precision engineered PMMA prismatic lens with internal PET film layer providing diffuse glare free illumination to help design to UGR requirements.

ELECTRIC:

Universal input voltage of 120-277VAC. Junction box installed on fixture with integral driver for connection to branch circuit and dimming system, (dimming to 1%). Fixture must be installed in accordance with local electrical codes.

[For EM Battery Kit order separately.](#)

For more information on integrated controls options, [refer to controls guide on website.](#)

WARRANTY:

5 years

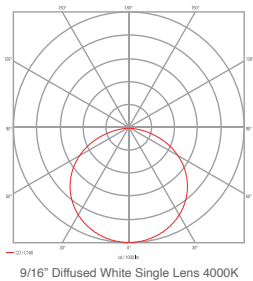
LISTINGS:

ETL/cETLus CE RoHS. Indoor use only. IC Rated. IP 40.

IP65 rated option

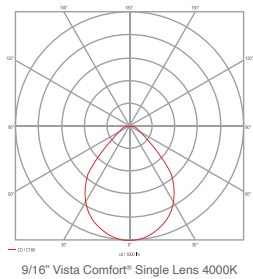
IP ratings are intended below finished ceiling

Photometrics CRI = >82 L₈₀ > 60K hrs



Diffused White Single Lens

Light Output	Output (lm/ft)	Power (watts/ft)	Efficacy (lm/W)
LO = Low	542	4.6	117.8
MO = Medium	813	7.2	112.9
HO = High	1085	9.4	115.4



Vista Comfort Single Lens

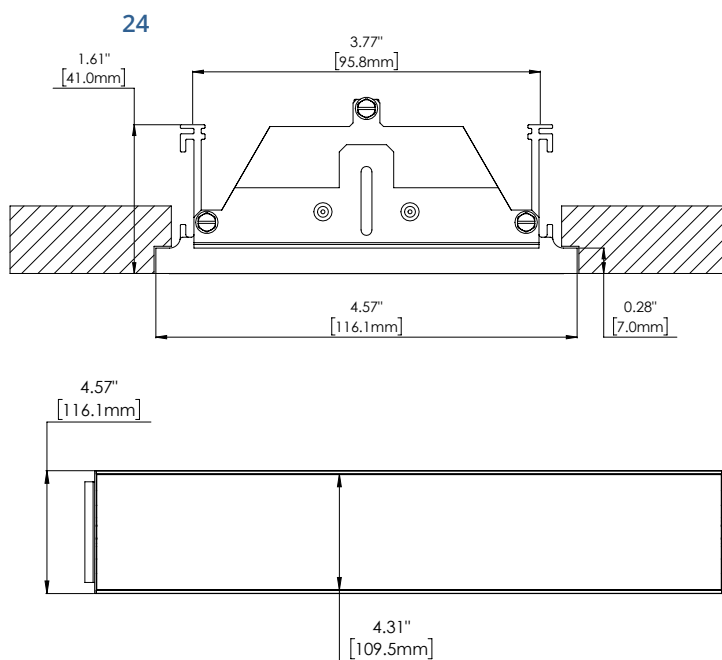
Light Output	Output (lm/ft)	Power (watts/ft)	Efficacy (lm/W)
LO = Low	558	4.6	121.4
MO = Medium	837	7.2	116.3
HO = High	1117	9.4	118.9

**Complete photometric info and IES files are available for download at www.jlc-tech.com*

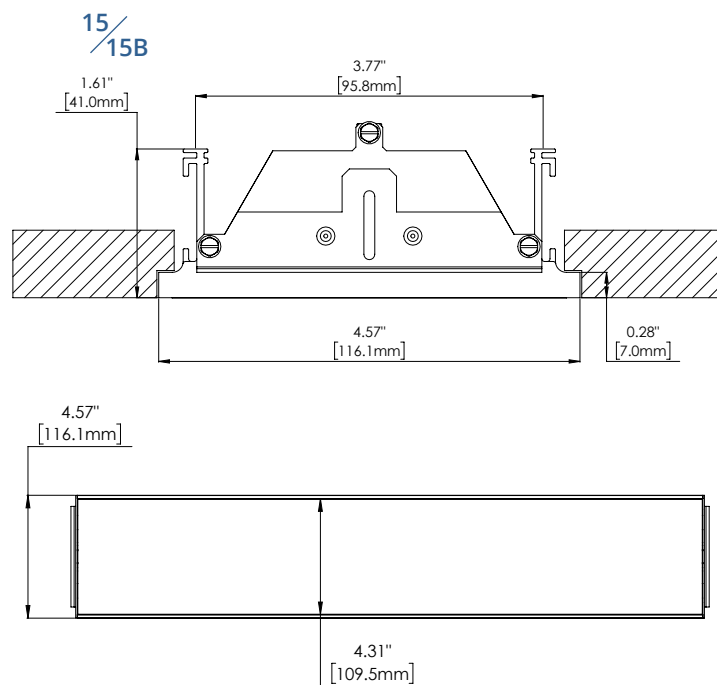
JLC-Tech LLC | Pembroke, MA – USA | info@jlc-tech.com | www.jlc-tech.com



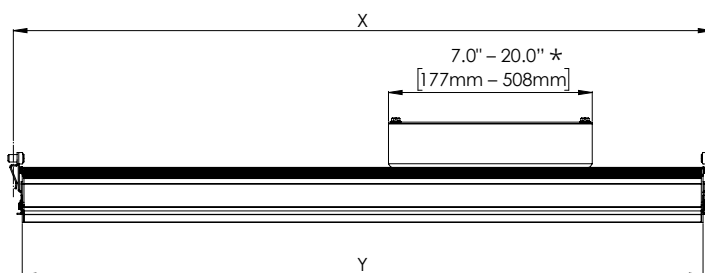
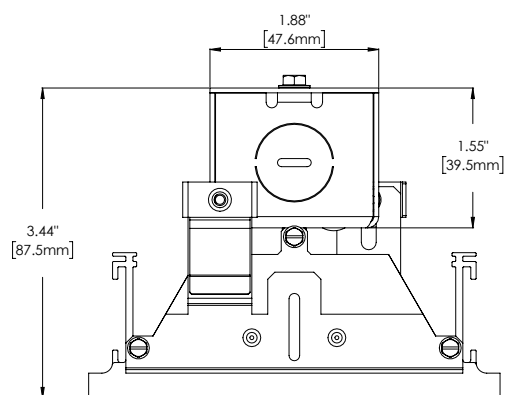
Dimensions (Compatible with Tegular and Lay-in tiles)



15/16" GEMINI Single Lens
GEMS-XX-X-24-XX-X-W-UNV



9/16" GEMINI Single Lens
GEMS-XX-X-15/15B-XX-X-W-UNV



* Junction box length is 7" with most standard universal input 0-10V dimming options, and 20" for 6ft and 8ft product lengths. Junction box length may vary for tunable white or other driver/controls options, [refer to the controls guides on website for more information.](#)

Size	Grid Type	X	Y
2 = 2ft	15/15B = 9/16"	24"	23.4"
4 = 4ft	15/15B = 9/16"	48"	47.4"
5 = 5ft	15/15B = 9/16"	60"	59.4"
6 = 6ft	15/15B = 9/16"	72"	71.4"
8 = 8ft	15/15B = 9/16"	96"	95.4"

Size	Grid Type	X	Y
2 = 2ft	24 = 15/16"	24"	23"
4 = 4ft	24 = 15/16"	48"	47"
5 = 5ft	24 = 15/16"	60"	59"
6 = 6ft	24 = 15/16"	72"	71"
8 = 8ft	24 = 15/16"	96"	95"