

INSTRUCTION MANUAL

IMPORTANT SAFEGUARDS

When using electrical equipment, basic safety precautions should always be followed, including the following:

READ AND FOLLOW ALL SAFETY INSTRUCTIONS

1. T-BAR RGBW™ fixtures are designed to work with Class 2 – 24VDC power supplies only. Use of any other power source will cause damage, shorten the life of the fixture, and may void the warranty.
2. This device must be installed and wired by a licensed electrician.
3. JLC-Tech LLC will not be held responsible if the devices are not installed according to applicable codes and safety standards.
4. Installation is subject to local codes and jurisdiction.
5. Keep these instructions for the person responsible for the maintenance of this installation.
6. The use of accessory equipment not recommended by the manufacturer may cause an unsafe condition, void warranty, and result in non-compliance with UL specifications.



SAVE THESE INSTRUCTIONS



INSTALLATION INSTRUCTIONS

READ INSTRUCTIONS ENTIRELY BEFORE INSTALLATION

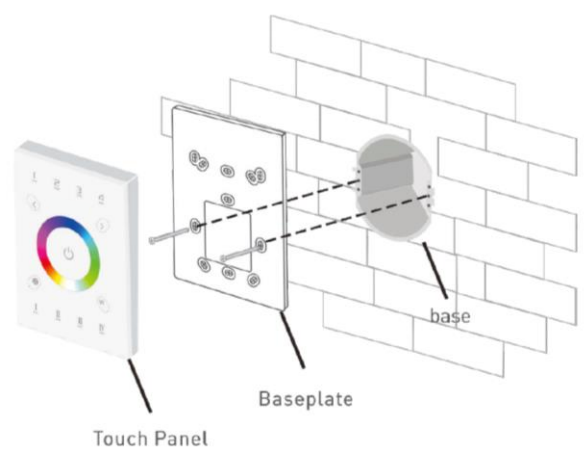
1. FIXTURE COMPATIBILITY

The DMX touchscreen device is designed to be used only with the DMX driver kit (TBRGW-DMX-100W-UNV) for T-BAR RGBW™ 24V DC product lines (max run of 8ft of product per kit).

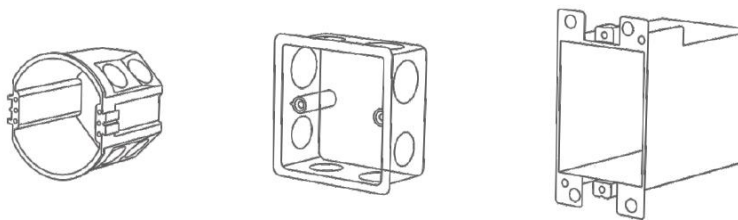
2. TOUCHSCREEN DEVICE INSTALLATION

The DMX touchscreen device must be securely fastened on site. Appropriate location and mounting hardware to be determined by the installer depending on field conditions. The touchscreen device must be installed in an accessible location.

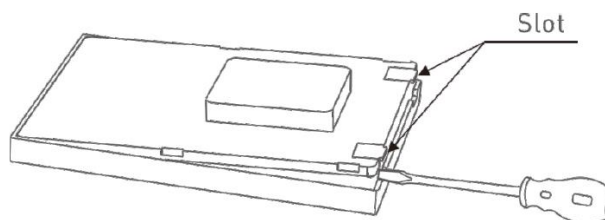
- A. In the location the touchscreen device junction box is to be installed, run appropriate branch circuit wiring and DMX wiring for connection to the device.



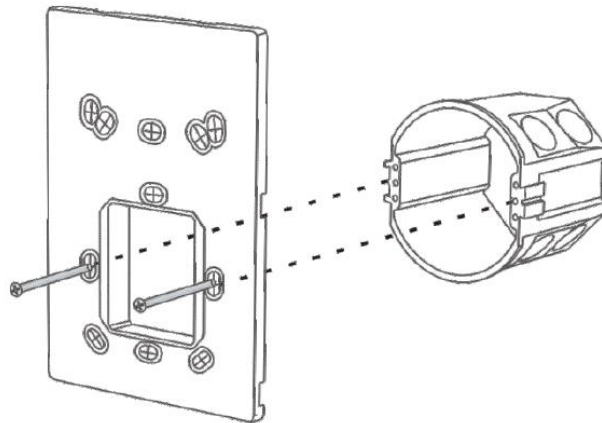
- B. Install the junction box into the wall. Use typical single gang box as shown below. (Not provided)



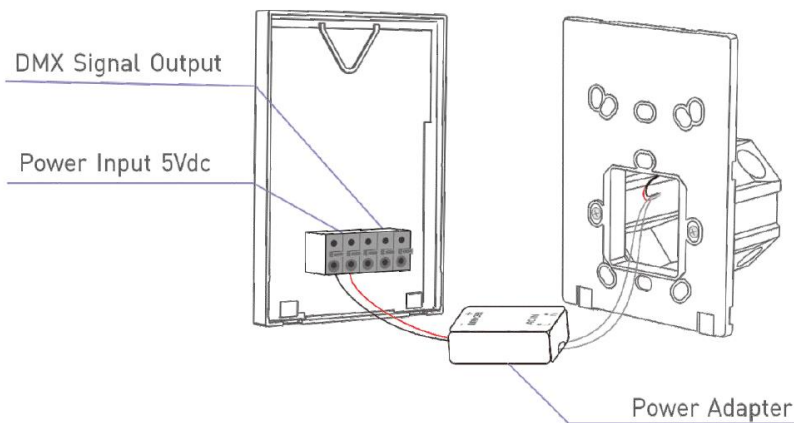
- C. Separate the touch panel from the baseplate. Use a flathead screwdriver to pry them apart from the slots on the bottom of the touchscreen device.



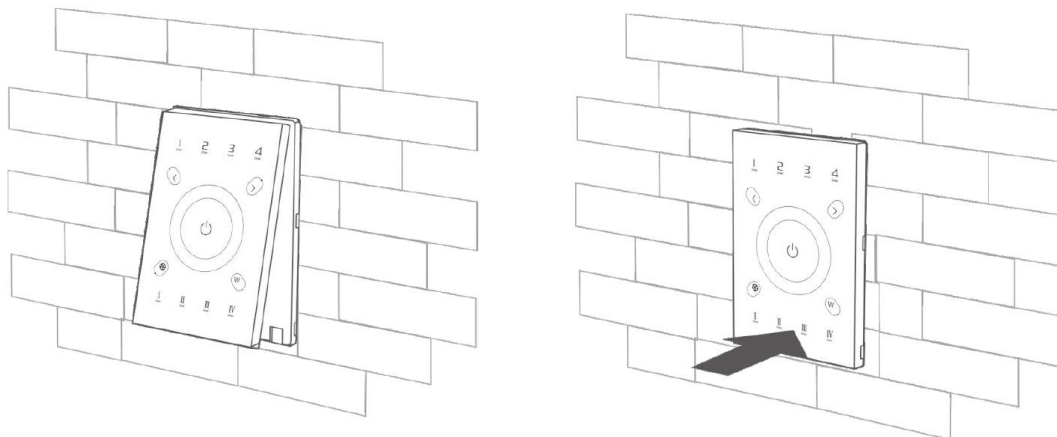
D. Screw the baseplate into the junction box.



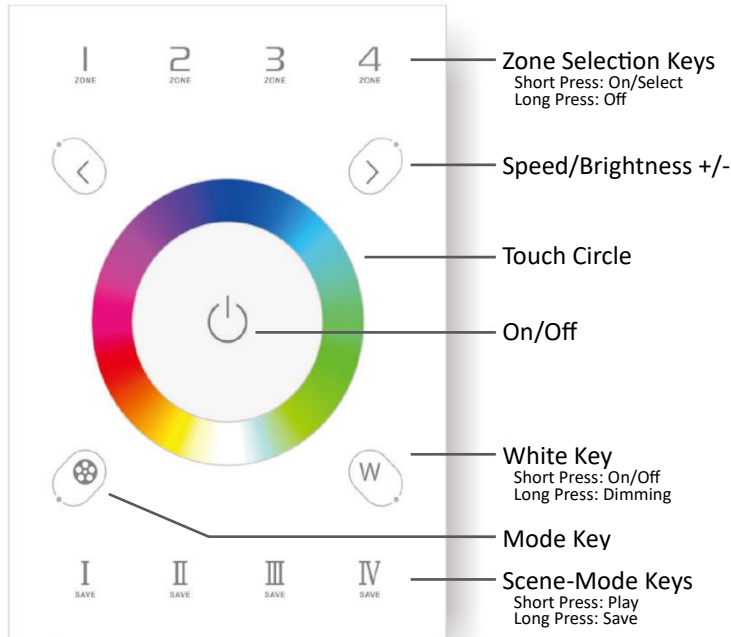
E. Wire the 5V power adapter (120-240 VAC input) to branch circuit and insert into the junction box. Install according to local codes and jurisdiction. Plug power adapter connector into the back of the touch panel. Connect the DMX wires to the touch panel. Refer to section 4 for more information on the touchscreen device wiring terminals.



F. Reattach the touch panel to the baseplate by lining up the upper part of the touch panel and then press the bottom into the slots.



3. TOUCHSCREEN DEVICE KEY FUNCTIONS

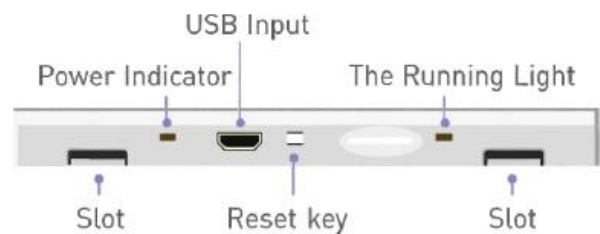
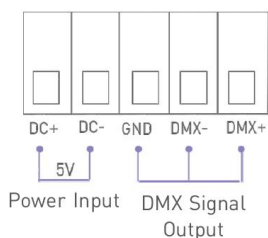
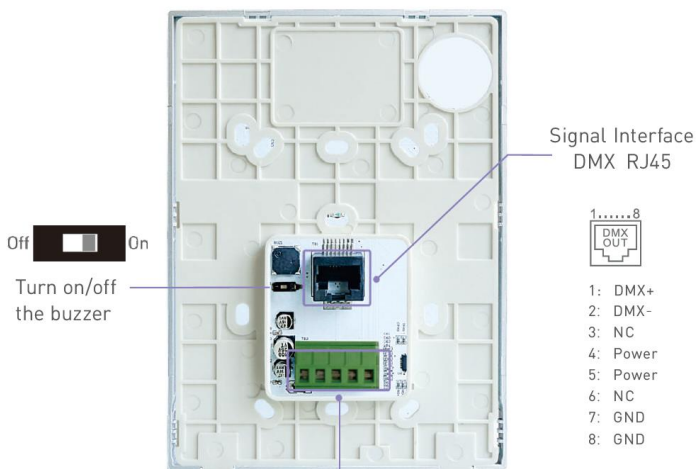


MODES (Press to select):

- | | |
|---------------------|------------------|
| 1. Static Red | 2. Static Green |
| 3. Static Blue | 4. Static Yellow |
| 5. Static Purple | 6. Static Cyan |
| 7. Static White | 8. RGB Jumping |
| 9. 7 Colors Jumping | 10. RGB Smooth |
| 11. 7 Colors Smooth | 12. Off |

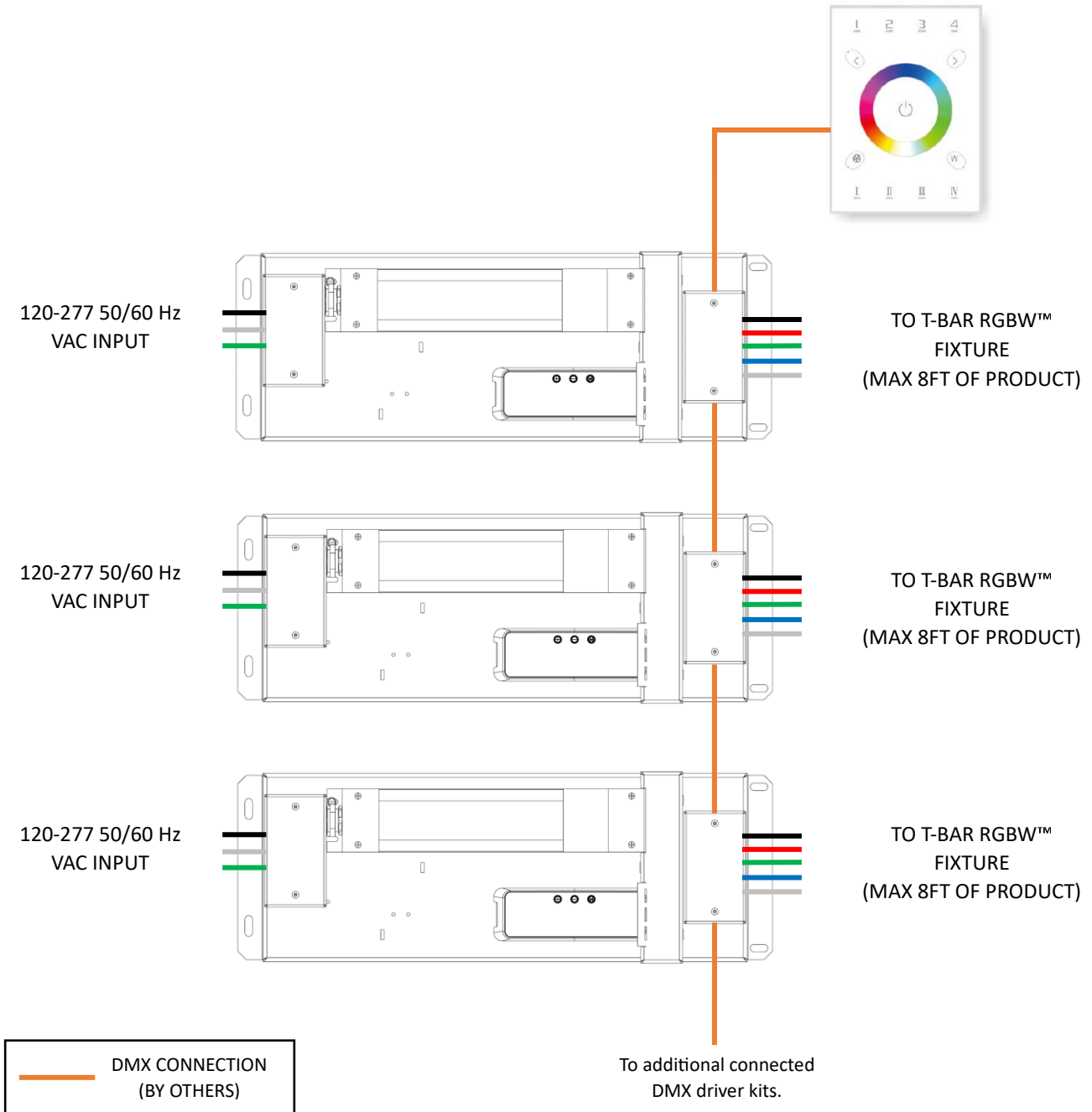
4. TOUCHSCREEN DEVICE TERMINALS

The DMX touchscreen device requires 5 VDC input and DMX signal output connections (by others). See the below illustration for wiring details.



5. DMX WIRING

Make the connection from the DMX touchscreen device to the DMX driver kit using appropriate DMX connections (by others). If using multiple kits in the same DMX network, it is recommended to make an additional connection to 24VDC(-) between kits. See the DMX driver kit installation instruction sheet for more details.



Bussed network of multiple DMX driver kits with DMX touchscreen device.