

ETL listed for indoor use

**CAUTION:**

\* T-BAR UP™ is designed to work with Class 2 - 24Vdc power supply only. Use of any other power source will cause damage, shorten the life of the fixture and may void the warranty

\*This fixture must be installed and wired by a qualified electrician.

\*JLC-Tech LLC will not be held responsible if the fixtures are not installed according to applicable codes and safety standards.

\*Installation is subject to local code and jurisdiction.

\*Keep these instructions for the person responsible for the maintenance of this installation.

	Number of fixtures	MODEL	Number of fixtures	MODEL
Option 1 Total load* 96W	6	HIGH POWER 2 foot / 60cm Total W/fixture 16W		
Option 2 Total load* 96W	4	HIGH POWER 2 foot / 60cm Total W/fixture 16W	1	HIGH POWER 4 foot / 120cm Total W/fixture 32W
Option 3 Total load* 96W	3	HIGH POWER 4 foot / 120cm Total W/fixture 32W		
Option 4 Total load* 96W	2	HIGH POWER 4 foot / 120cm Total W/fixture 32W	2	HIGH POWER 2 foot / 60cm Total W/fixture 16W

\* Total load does not include power supply consumption



RoHS



MADE IN USA

**HOW TO ELECTRIFY THE T-BAR UP™**

CLASS 2 POWER SUPPLY 120-277V/24Vdc  
SOLD SEPARATELY  
REFER TO DRIVER INSTALLATION FOR  
SPECIFIC WIRING INSTRUCTIONS

POWER SUPPLY CODE:  
**TBSL-XX-HP-XX-UNV**

24Vdc Output Voltage

PLENUM RATED 2" CABLE WITH CLASS II  
QUICK CONNECTORS ON EACH SIDE FOR  
MULTIPLE PRODUCT CONNECTIONS  
(PROVIDED)

RED CABLE  
BLACK CABLE

EACH QUICK CONNECTORS  
ALLOWS FOR THE POSSIBILITY  
TO ADD CABLES FOR LONGER  
SPACING CONNECTION.

SEE ABOVE TABLE FOR MAX PRODUCT CONNECTED IN A ROW

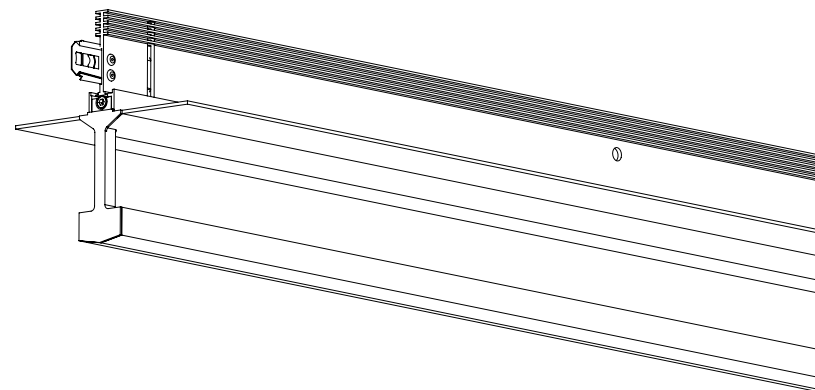
**USE SOLID  
COPPER  
18-16AWG  
OR FERRULES**

**ATTENTION: READ ALL INSTRUCTIONS ENTIRELY BEFORE INSTALLATION**

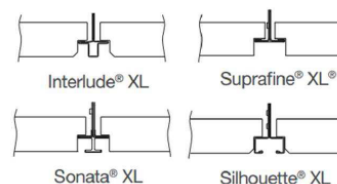


CEILING SOLUTIONS  
COMPATIBLE PRODUCT

THE NEXT  
GENERATION GREEN  
LIGHTING SOLUTION  
FOR SUSPENDED  
CEILING APPLICATIONS



SPECIFICALLY  
DESIGNED FOR USE WITH  
ARMSTRONG 9/16" GRID



The T-BAR LED product line is protected under the following patents:  
Patent No. 8,177,385; 9,879,850; 004481000-0001; 004481000-0002.  
Additional patents are pending.

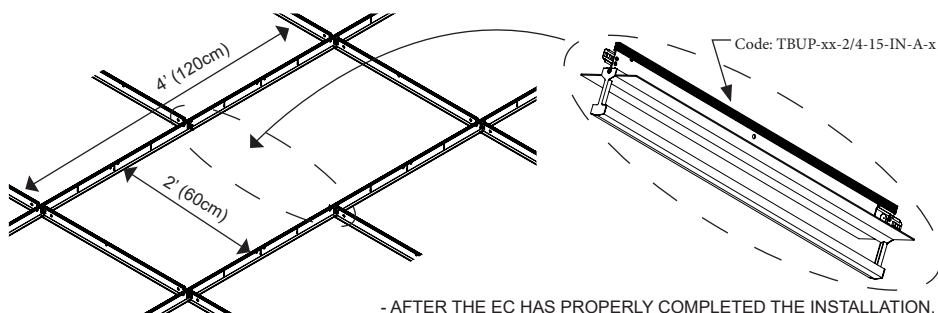
MADE IN USA

ATTENTION! READ ALL INSTRUCTIONS ENTIRELY BEFORE INSTALLATION

CODE: T-BAR312 T-BAR UP Armstrong Instruction Sheet 9/16" Rev.02

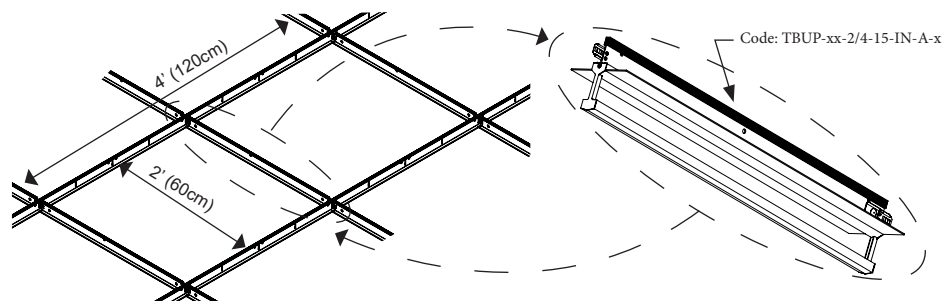
## WHERE I CAN INSTALL THE T-BAR UP™

- IN A NEW 9/16" (T15) CEILING GRID INSTALLATION, THE ACOUSTICAL CONTRACTOR (AC) WILL INSTALL THE ARMSTRONG CEILING GRID IN A 2'x2' (60X60cm), 2'x4' (60X120cm) OR 4'x4' (120X120cm) LEAVING SPECIFIC OPENINGS FOR THE ELECTRICAL CONTRACTOR (EC), ACCORDING TO THE LIGHT REQUIREMENT
- THE EC WILL INSTALL A 2' (60cm) OR A 4' (120cm) T-BAR UP™ AT THE SPECIFIC OPENING IN THE CEILING



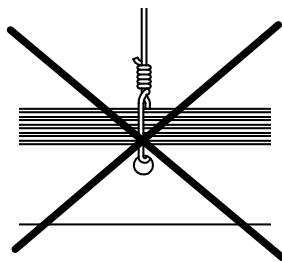
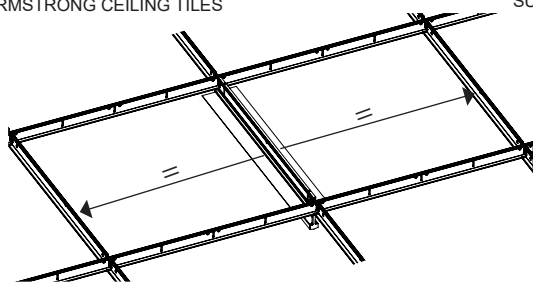
- AFTER THE EC HAS PROPERLY COMPLETED THE INSTALLATION, THE AC WILL FINISH THE CEILING WITH APPROPRIATE SIZE CEILING TILES

- IN AN EXISTING SUSPENDED 9/16" (T15) GRID, VERIFY THE **EXISTING CEILING IS AN ARMSTRONG CEILING**, THEN LOCATE THE CROSS TEES THAT ARE INTENDED TO BE SUBSTITUTED WITH THE 2' (60cm) OR 4' (120cm) T-BAR UP™ (ACCORDING TO THE LIGHT REQUIREMENT)
- THE AC SHALL TEMPORARILY REMOVE THE TILES WITHIN THE SPACE SELECTED AND REMOVE THE CROSS TEES
- THE EC SHALL THEN INSTALL THE 2' (60cm) OR 4' (120cm) T-BAR UP™ IN THIS DESIRED LOCATION
- AFTER THE EC HAS PROPERLY COMPLETED THE INSTALLATION, THE AC WILL REINSTALL THE EXISTING OR REPLACEMENT CEILING TILES



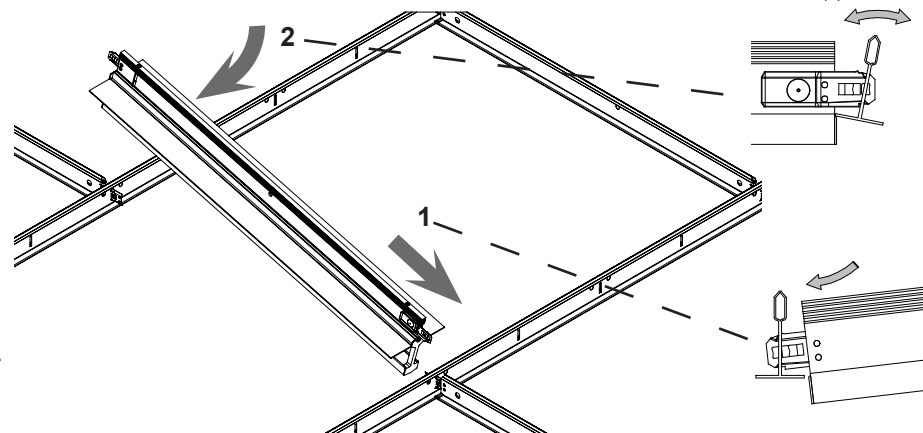
**NOTE:** WHEN CORRECTLY INSTALLED THE END DETAILS WILL ENSURE THE T-BAR UP™ IS POSITIONED CORRECTLY ALLOWING FOR THE CORRECT SPACING OF THE ARMSTRONG CEILING TILES

**NOTE:** THE T-BAR UP™ HAS BEEN SEISMICALLY TESTED FOR USE WITH ARMSTRONG CEILINGS AND **DOES NOT NEED** TO BE INDEPENDENTLY SUPPORTED

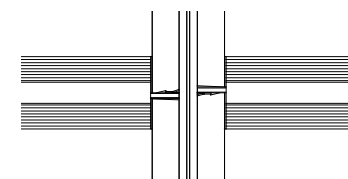
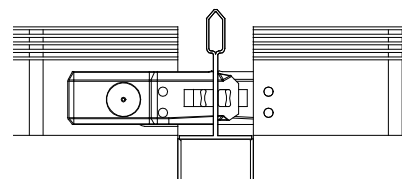


## HOW I INSTALL THE T-BAR UP™

- PLACE THE PRODUCT OVER THE GRID FOLLOWING THE BELOW CONFIGURATION. ENTER ONE CLIP INSIDE THE DESIRED ROUT LOCATION (1).
- ENTER THE OTHER CLIP ON THE OTHER SIDE INSIDE THE CORRESPONDING ROUT LOCATION BY TWISTING THE GRID AND APPLYING ENOUGH PRESSURE TO ALLOW THE PRODUCT TO ENTER IN PLACE (2).

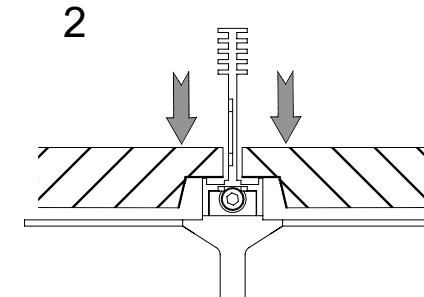
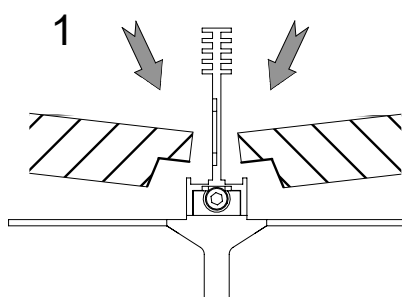


- DETAILED SIDE AND TOP VIEW OF TWO T-BAR UP™ CONNECTED TOGETHER. THE MOUNTING CLIP IS DESIGNED TO CONNECT SIDE BY SIDE WITH ANOTHER T-BAR LED UP™ OR WITH A STANDARD ARMSTRONG CROSS TEE



- AFTER THE EC HAS ELECTRIFIED THE T-BAR UP™ (SEE FOLLOWING PAGE FOR INSTRUCTION), THE AC CAN INSTALL THE ARMSTRONG CEILING TILES IN THEIR CORRECT POSITION OVER THE T-BAR UP™ PRODUCT AS SHOWN

**NOTE:** ONLY TEGULAR AND LAY IN CEILING TILES MAY BE USED WITH THE T-BAR UP™



ATTENTION: READ ALL INSTRUCTIONS ENTIRELY BEFORE INSTALLATION