

# T-BAR QUADRO | Order Specification Guide

T-BAR QUADRO™

Product Name	LED/K Color	Grid Size	Grid Type	Optic	Mounting Clips	Color	Driver	Options
<b>TBQD</b> = T-BAR QUADRO	<b>HW</b> = 3000K <b>MW</b> = 3500K <b>MN</b> = 4000K <b>CN</b> = 5000K  90 CRI available, on request.	<b>2Q</b> = 2 x 2 ft <b>Metric</b> <b>6Q</b> = 60 x 60 cm	<b>24</b> = 15/16" <b>15</b> = 9/16" <b>15B</b> = 9/16" Bolt Slot	<b>D</b> = Diffusing Lens <b>B</b> = Block Clear Diffusing Lens <b>B2</b> = Block Frosted Diffusing Lens <b>C2</b> = Multi-Reflector <b>C2WH</b> = White Multi-Reflector <b>C2BL</b> = Black Multi-Reflector	<b>U</b> = Universal <b>A</b> = Armstrong <b>C</b> = Custom	<b>W</b> = White <b>B</b> = Black <b>C</b> = Custom	<b>UNV</b> = 120-277 VAC 0-10V dimming <b>DAL</b> = Universal 120-277V DALI Dimming <b>347</b> = 347 VAC 0-10V dimming	<b>CP</b> = Chicago Plenum <b>EM</b> = Universal 120-277V with battery backup <b>IP65</b> = IP65 <sup>1</sup> <b>POE</b> = Power over Ethernet <sup>2</sup> <b>LA</b> = Lutron Athena Wireless Node <b>NW</b> = nLight® Wired

www.jlc-tech.com/patents

<sup>1</sup>Not available in C2 Model

<sup>2</sup>Consult factory

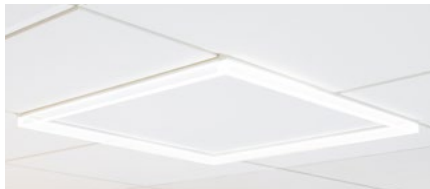
*Diffusing Lens (D)*



*Block Clear Diffusing Lens (B)*



*Block Frosted Diffusing Lens (B2)*



*Multi-Reflector (C2)*



## NOTES:

T-BAR QUADRO kits are designed to provide a 2x2 square of light by replacing cross tees in a suspended ceiling. Kit includes Class 2 remote power supply with integrated JB compartment for 120-277VAC input direct wiring with metal conduit. Max distance from power supply to fixtures is 30 feet with 18 AWG wire. Longer distance achievable if using higher gauge wire. Please refer to the T-BAR LED power supply documentation for more detailed information. EM option includes remote driver pre-wired with battery backup.

## APPLICATIONS:

Executive, Medical, Health, Educational, Retail, Hotels, Airport, Hospitality and any open space areas that require a unique and elegant architectural lighting design.

## MOUNTING:

Universal mounting brackets are for easy installation to standard 15/16" or 9/16" T-Bars of most manufacturers' ceiling suspension systems. Armstrong compatible mounting clips for installation with Armstrong Ceiling 15/16" Prelude® and Clean Room™, 9/16" Suprafine®, Silhouette®, Sonata® and Interlude® suspension systems. Compatible with Tegular and Lay-in tiles.

## MATERIALS:

Anodized and painted aluminum extruded body, steel mounting clips, white PC end caps, high transmitting acrylic PMMA lens, (D, B, B2 Models), high reflectance 98% aluminum coated or white or black PC reflectors on each LED for a dark light effect, (C2 Models).

## ELECTRIC:

Fixtures consume 64W per kit (power supply consumption not included). Class 2 plenum rated cables at each end of fixture equipped with quick connectors for connection to 24VDC power supply output and to allow the kit to be easily connected together. Use solid copper wire or wire ferrules to fit into quick connectors. Available with 0-10V or DALI dimming system (dimnable to 1%). 120-277VAC input remote power supply included.

[For EM Battery/Driver Kit, order separately.](#)

For more information on integrated controls options, [refer to controls guide on website.](#)

## WARRANTY:

5 years

## LISTINGS:

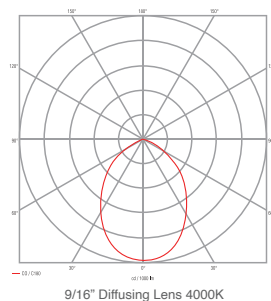
ETL/cETLus CE RoHS. Indoor use only. IC Rated. IP 40, IP 20 (C2 Models).

IP65 rated option

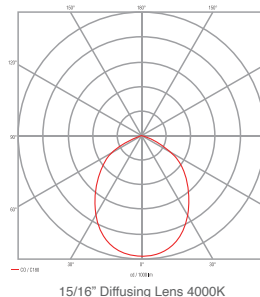
IP ratings are intended below finished ceiling

Photometrics    CRI = >82     $L_{80} > 60K$  hrs

### Diffusing

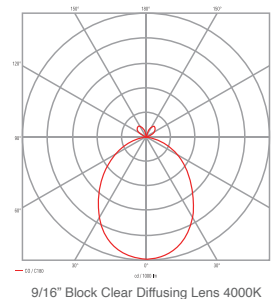


TBQD-MN-XX-15-D-X-X-X  
3560 lm  
54 lm/W

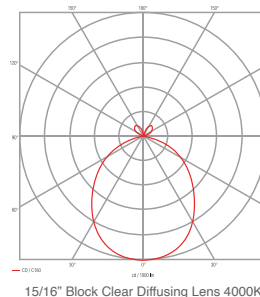


TBQD-MN-XX-24-D-X-X-X  
4672 lm per foot  
75 lm/W

### Block Clear Diffusing

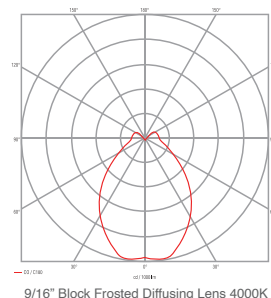


TBQD-MN-XX-15-B-X-X-X  
3504 lm  
56 lm/W

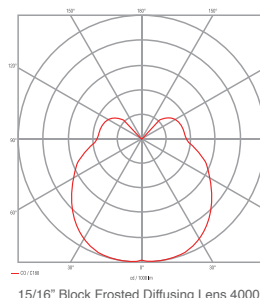


TBQD-MN-XX-24-B-X-X-X  
4512 lm  
72 lm/W

### Block Frosted Diffusing



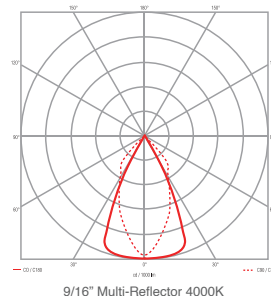
TBQD-MN-XX-15-B2-X-X-X  
3680 lm  
59 lm/W



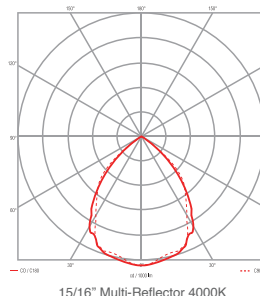
TBQD-MN-XX-24-B2-X-X-X  
4688 lm  
75 lm/W

### Multi-Reflector (metalized finish)

\*C2WH and C2BL IES files  
available on [www.jlc-tech.com](http://www.jlc-tech.com)

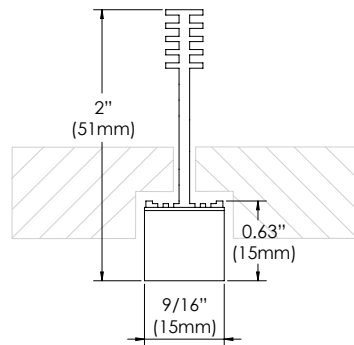


TBQD-MN-XX-15-C2-X-X-X  
6152 lm  
98 lm/W

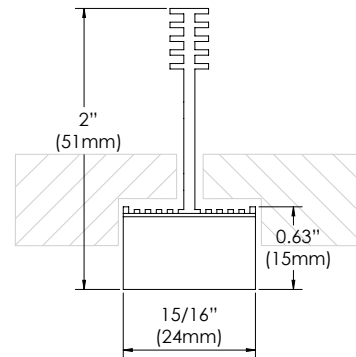


TBQD-MN-XX-24-C2-X-X-X  
6272 lm  
100 lm/W

*\*Complete photometric info and IES files are available for download at [www.jlc-tech.com](http://www.jlc-tech.com)*

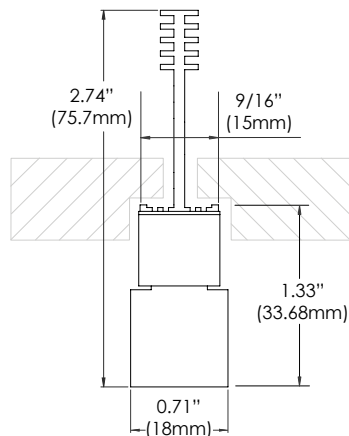
Profile Dimensions *(Compatible with Tegular and Lay-in tiles)*

9/16" Diffusing Lens/Multi-Reflector  
TBQD-XX-XX-15-D/C2-X-X-X

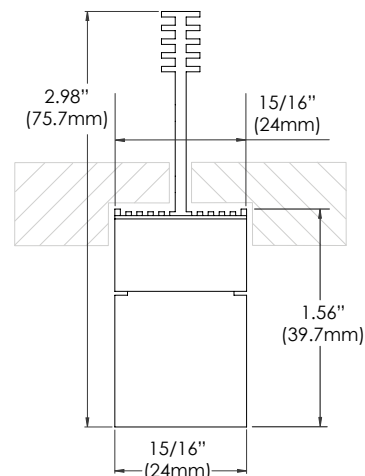


15/16" Diffusing Lens/Multi-Reflector  
TBQD-XX-XX-24-D/C2-X-X-X

*Clear block and frosted block variable heights 1/2" - 4" available, consult factory.*



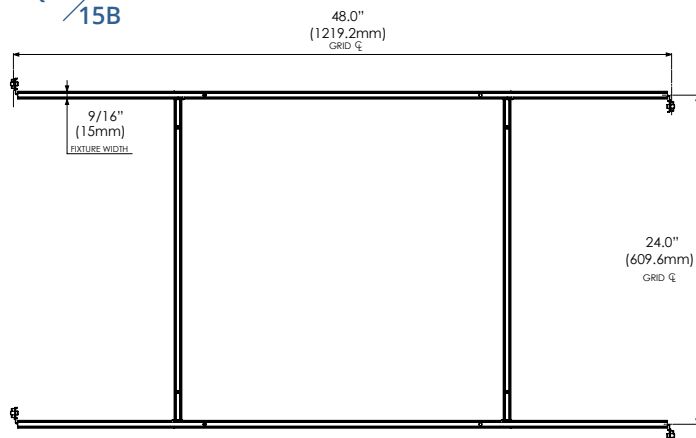
9/16" Block Lens  
TBQD-XX-XX-15-B/B2-X-X-X



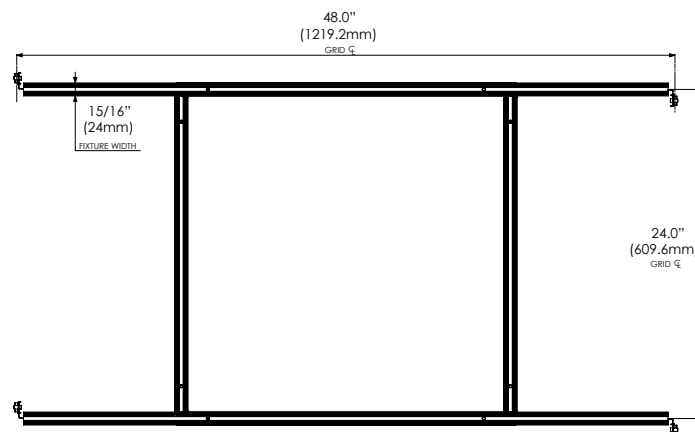
15/16" Block Lens  
TBQD-XX-XX-24-B/B2-X-X-X

## Dimensions

2Q 15/15B

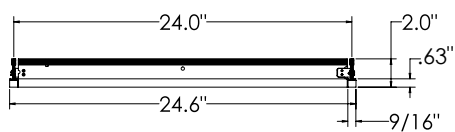


2Q 24

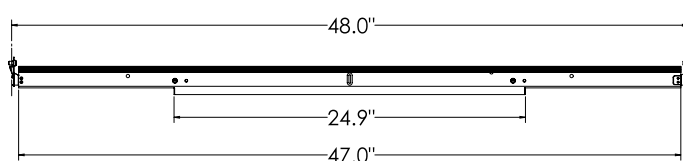
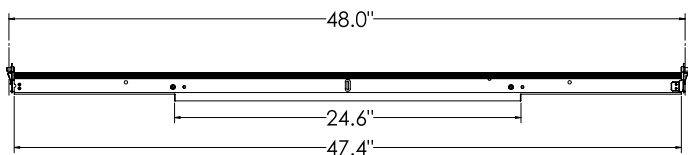
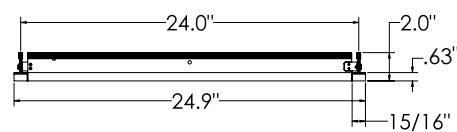


## Diffusing Lens/Multi-Reflector

2Q 15/15B

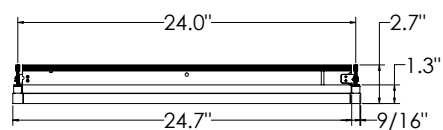


2Q 24



## Block Clear/Block Frosted Diffusing Lens

2Q 15/15B



2Q 24

