

T-BAR ECO | Order Specification Guide



Product Name	LED/K Color	Grid Size	Grid Type	Optic	Mounting Clips	Driver	Options
TBECOH = T-BAR ECO High Output 120-277V	HW = 3000K MW = 3500K MN = 4000K	2 = 2 ft 4 = 4 ft 4L	24 = 15/16"	DW = Diffuse White Round DWS = Diffuse White Square	U = Universal A = Armstrong	UNV = Universal 120-277V 0-10V dimming POE = Power over Ethernet*	CP = Chicago Plenum Optional EM Battery Kit available (sold separately).
TBECOL = T-BAR ECO Low Output 120-277V	CN = 5000K	Metric 6 = 60 cm 12 = 120 cm 12L					

www.jlc-tech.com/patents

*For PoE, consult factory

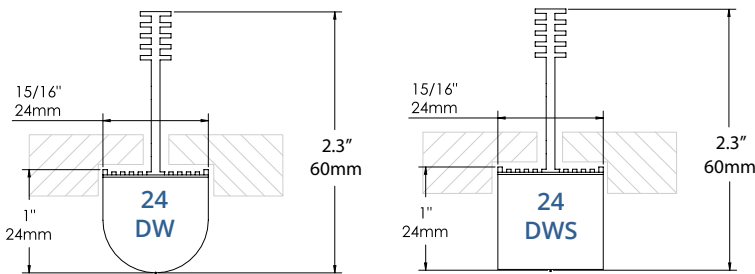
CRI > 82 L₈₀ > 60K hrs

Type	Lumens*	Watts	lm/W*	lm/ft*
TBECOL-2	949	6.4	147	474
TBECOL-4	1898	12.5	152	474
TBECOH-2	1328	9.4	140	664
TBECOH-4	2669	17.9	149	667

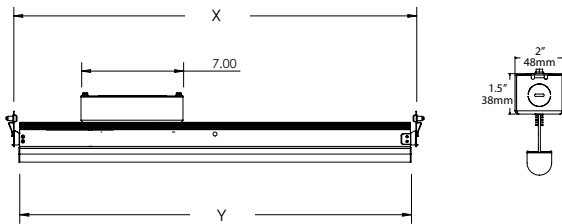
***4000K**

Profile Dimensions

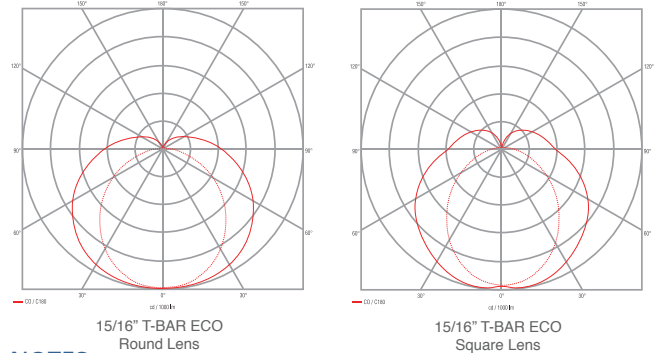
(Compatible with Tegular and Lay-in tiles)



Length Dimensions



Size	Grid Type	X	Y
2 = 2ft	24 = 15/16"	24"	23"
4 = 4ft	24 = 15/16"	48"	47"
4L	24 = 15/16"	48"	24"



NOTES:

T-BAR ECO is a high efficiency LED fixture with integral driver, accepting universal voltage input and 0-10V dimming, offering uniform and diffuse light. Mounted junction box includes driver and compartment for AC input direct wiring and dimming connection. Fixture must be installed in accordance with local electrical codes.

APPLICATIONS:

Executive, Medical, Health, Educational, Retail, Hotels, Airport, Hospitality and any open space areas that require a unique and elegant architectural lighting design.

MOUNTING:

Universal mounting brackets for easy installation to standard 15/16" T-Bars of most manufacturers' ceiling suspension systems. Armstrong compatible mounting clips for installation with Armstrong Ceiling 15/16" Prelude® and Clean Room™ suspension systems. Compatible with Tegular and Lay-in tiles.

MATERIALS:

Anodized aluminum extruded body, steel mounting clips, white PC end caps, high transmitting acrylic PMMA lens.

ELECTRIC:

Universal input voltage of 120V - 277VAC. Junction box installed on fixture with integral driver for connection to line voltage and 0-10V dimming system. 90% LED lumen maintenance at 60,000hrs (L₈₀ > 60k hrs) For EM Battery/Driver Kit order separately. PoE options available, consult factory.

WARRANTY:

5 years limited warranty. For complete warranty terms, please visit our website.

LISTINGS:

ETL/cETLus CE RoHS Indoor use only. IC Rated. IP 40.

