

PO number: \_\_\_\_\_ Signature: \_\_\_\_\_



## EM Battery & Driver Kit | Order Specification Guide

Product Name	Driver Type	Battery	Wattage	Voltage
TBEM = T-BAR LED EM Battery/Driver Kit	PS = Non Dimmable DIM = 1% Dimmable 0-10 VDC	12 = 12W Battery	64 = 64W Driver	UNV = Universal 120-277V

**WARRANTY:** 5 years

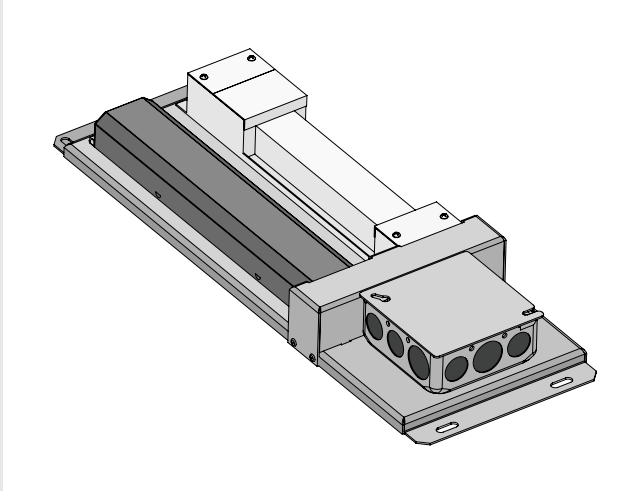
### EM Battery & Driver Kit

#### 24VDC 64W LED Driver with 12W Battery Kit 0-10 VDC dimmable and non dimmable

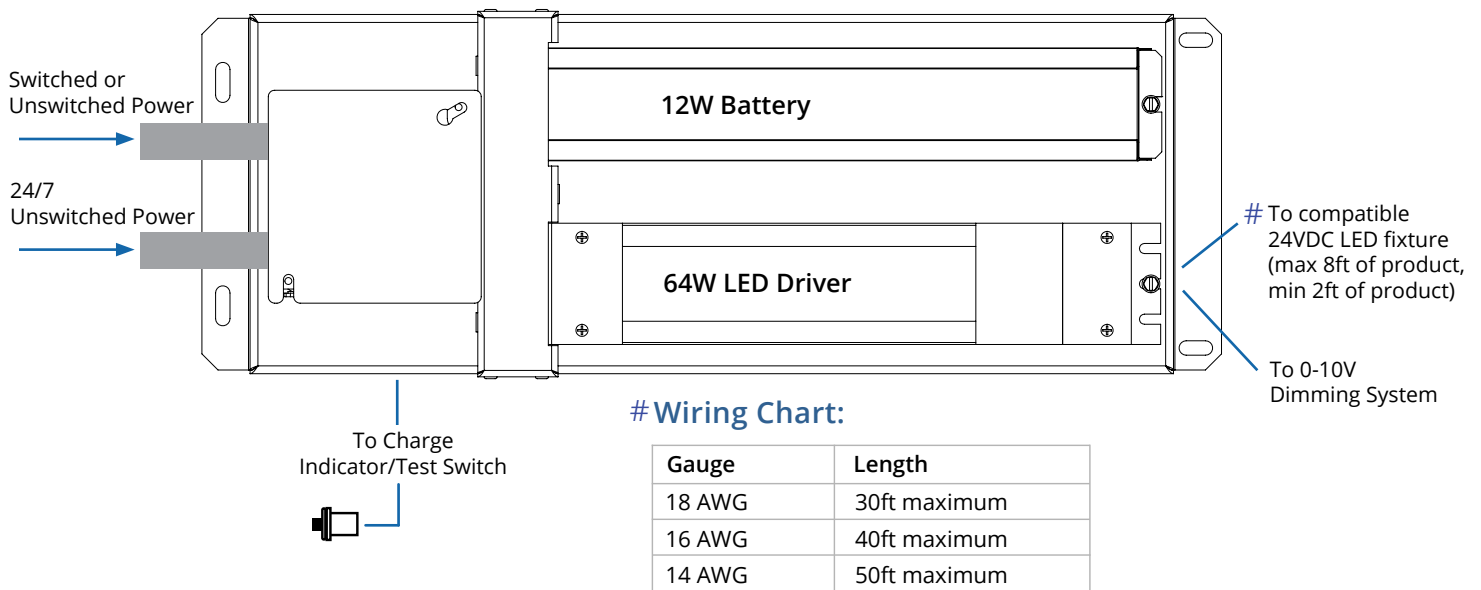
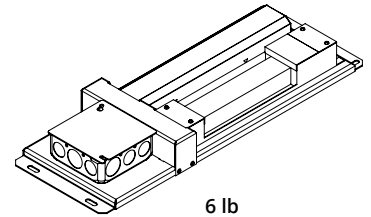
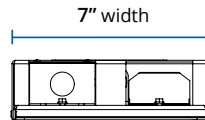
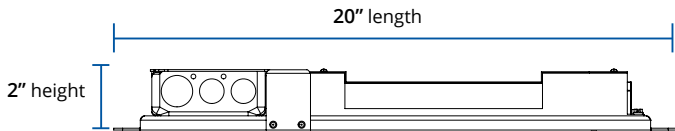
Factory wired battery backup and LED driver for remote installation allows the same 24VDC fixture to be used for both normal and emergency operation. In emergency mode the kit provides 12W of power for 90 minutes. Available with 0-10Vdc nominal 1% dimming during non-emergency mode.

Power kit includes 4" JB for 120-277V AC input direct wiring with metal conduit and single-piece charge indicator and test switch accessory.

EM Battery & Driver Kit is compatible with the following product range: T-BAR LED®, T-BAR UP®, T-BAR TWO®, T-BAR ECO® DC, Sorella®, GIRO™.



#### 24VDC 64W LED Driver and 12W Battery



\* Refer to spec sheet and installation instruction for technical specifications and detailed wiring diagram.