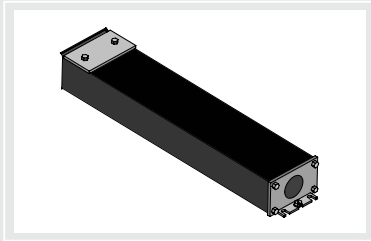


T-BAR LED Remote Drivers | Order Specification Guide

T-BAR LED® T-BAR UP® Sorella™

Product Name	Driver Type	Power	Wattage	Voltage
TBSL = T-BAR LED Power Supply	PS = Non Dimmable DIM = 1% Dimmable 0-10 VDC	HP = High Power	100W = 96W 200W = 192W 400W = 384W	UNV = Universal 100-277V

WARRANTY: 5 years Optional EM Battery Kit available (sold separately). *For Chicago Plenum installations T-BAR LED remote driver must be installed in a non-Chicago Plenum rated area or in a Chicago Plenum rated enclosure (by others).

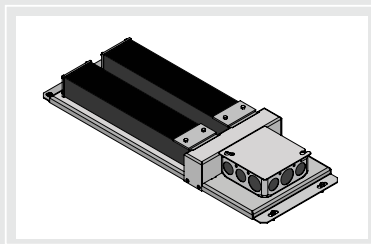
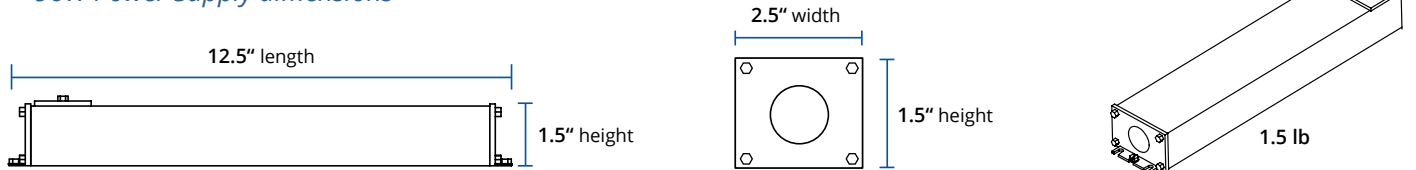


24VDC LED Driver 96W Power Supply

0-10 VDC dimmable and non dimmable

T-BAR LED and T-BAR UP modules can be parallel connected up to 12 linear feet max per power supply. Power supply includes JB compartment for AC input direct wiring with metal conduit.

96W Power Supply dimensions

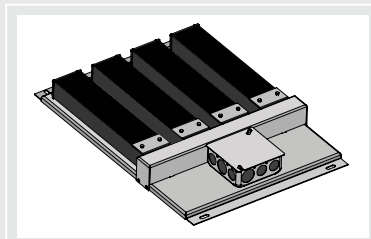
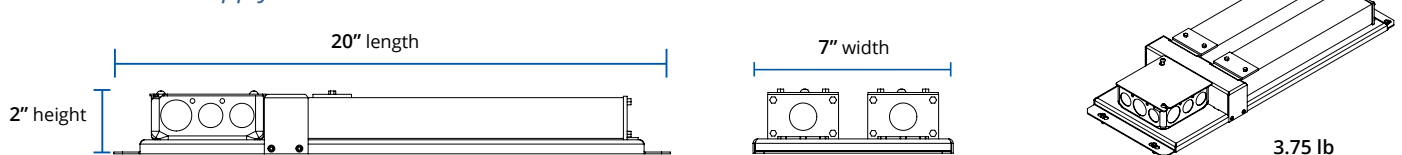


24VDC LED Driver 192W Power Supply

0-10 VDC dimmable and non dimmable

T-BAR LED and T-BAR UP modules can be parallel connected up to 12 linear feet max per channel totaling 24 linear feet of illuminated product. Power supply includes JB compartment for AC input direct wiring with metal conduit and separate branch connections for control of each individual driver.

192W Power Supply dimensions



24VDC LED Driver 384W Power Supply

0-10 VDC dimmable and non dimmable

T-BAR LED and T-BAR UP modules can be parallel connected up to 12 linear feet max per channel totaling 48 linear feet of illuminated product. Power kit includes JB for AC input direct wiring with metal conduit.

384W Power Supply dimensions

